

Atlantis Submarine

A Real Experience

"Totally awesome experience, now I can tell my friends back home that I actually went on a real submarine."

- Valerie Hickman, Westchester, NY

"At first I was anxious about going on a submarine but my husband and kids encouraged me and I don't regret it. We all had a great time."

- Susan Lama, Miami, FL

"Una experiencia unica. El Mundo submarino es tan tranquilo. Una excelente excursion."

- Juan Gonzalez, Venezuela



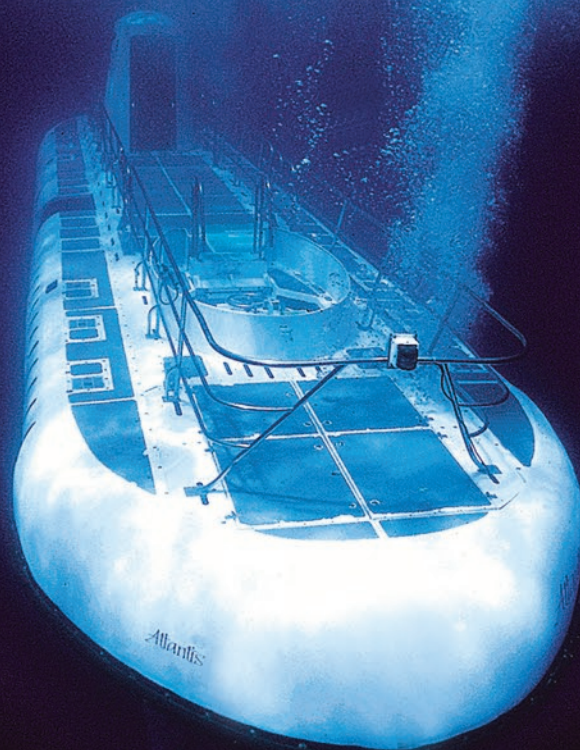
Atlantis Adventure Center

45 minute submarine dives are operated 6 days a week. Tours depart from the Atlantis Adventure Center located downtown across from Seaport Village Mall and Renaissance Resort. Total tour duration is approx. 1 hour and 30 minutes. Sorry no children under 3 feet tall. Child rates available. Prices and operating schedule subject to change without prior notice.

Space is limited...
Call 588 6881 for Reservations
 or visit your hotel activities desk.

www.atlantisadventures.com
arubareservations@atlantissubmarines.com

A Real Submarine. A Real Adventure.



Atlantis

© 2003 Atlantis Submarines International, Inc.

A Once in a Lifetime Undersea Experience.

Take an exciting voyage to depths of 150 feet below the Caribbean Sea.

Join Atlantis Submarines, voted Aruba's most outstanding attraction, on an unforgettable guided tour aboard the largest passenger submarine fleet in the world. Explore Aruba's mysterious underwater realm where you can

witness the remains of two shipwrecks, spectacular coral reefs and an abundance of colorful sea life. The submarine is US Coast Guard approved, spacious, fully air-conditioned with large view ports which allow you to relax and enjoy the wonders of the deep.



A Real Adventure.



ARUBA BARBADOS CAYMAN ISLANDS COZUMEL CURACAO ST. CROIX
 ST. JOHN ST. MARTIN ST. THOMAS HONOLULU KONA MAUI GUAM

Atlantis Submarine

THE HISTORY OF SUBMERSIBLES

In 1985, Atlantis Submarines launched the world's first battery-powered passenger submarine off the Caribbean's Cayman Islands. This began an adventure that has grown to a fleet of 14 submarines in five countries and two United States territories.



1560

Late 19th Century diving bell.

1715

John Lethbridge's "Diving Machine".



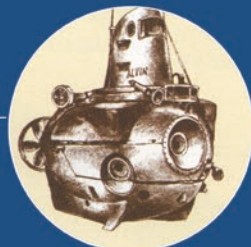
1929

Dr. William Beebe's Bathyspere. A steel sphere, only 4 feet 9 inches in diameter.



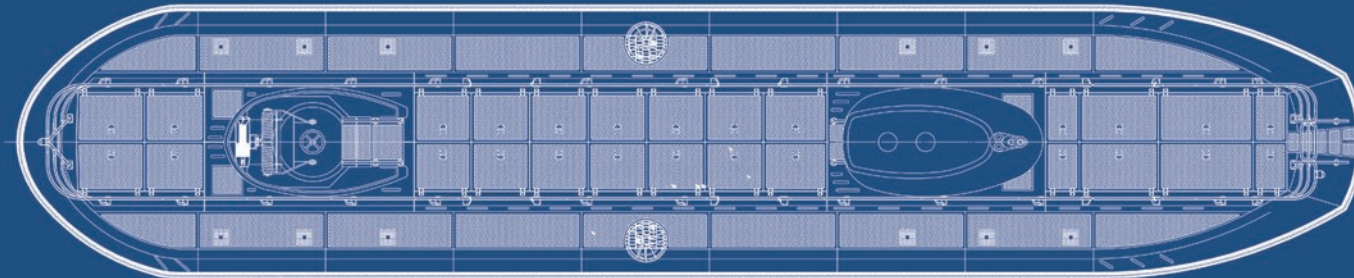
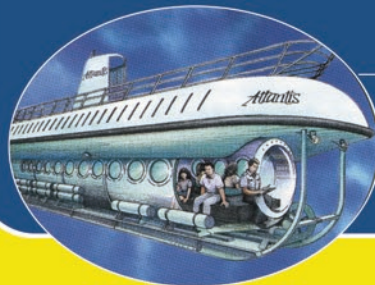
1964

Alvin, one of the world's most famous submersibles, took part in the search for the Titanic.



1991

Atlantis Aruba launches the Atlantis VI, the newest and most technologically advanced passenger submarine in the world.



Water Tanks

Sealed water tanks are adjusted to provide slightly positive buoyancy.

Underwater Communications

An Underwater wireless telephone is used to maintain communication with a surface vessel at all times while submerged.

Deck Railing

Designed to comply with U.S. Coast Guard regulations, the deck railings assures passenger safety.

Vertical Thruster

Video Camera

Navigation Lights

Standard internationally recognized marine configured navigation lights are used while on the surface at night.

Stern Thruster

DC battery powered electric thrusters. 2 stern thrusters, 2 vertical thrusters and 1 situated at the bow.

Oxygen

Two completely separate oxygen storage systems provide life support for normal and emergency situations.

High Pressure Air

High pressure cylinders store compressed air used for ballast, control systems and emergency breathing.

Video Camera

Viewing

Passenger Cabin

Guests aboard Atlantis and seated back-to-back on molded seats in two rows down the center of the passenger cabin. The Pilots are located at the bow, and co pilot at the stern of the cabin. There is more than six feet of headroom.

Front Viewport

Bow Thruster

THE ATLANTIS 48 PASSENGER SUBMARINE

Typical technical specifications (specs vary depending on location and passenger capacity).

SIZE: 65 ft.

DISPLACEMENT: 160,000 pounds.

DEPTH: Approved to 150 ft.

CAPACITY: 48 passengers.

CREW: 3 crew members.

SPEED: 3 knots submerged.

VIEWING: Large 25 1/2" diameter. Extra large (53") viewport.

LIGHTS: Normal navigational lights, plus 12 floodlights.

PROPULSION: DC battery-powered electric thrusters.

BUOYANCY: Sealed water tanks are adjustable to provide positive buoyancy.

SAFETY FEATURES: All systems are duplicated. Surface vessel maintains constant radio contact with the submarine.

CABIN PRESSURE: Normal atmosphere pressure. Air-Conditioned.

CERTIFICATION: U. S. Coast Guard-approved. American Bureau of Shipping Class A1 Manned Submersible. Cayman Island Shipping Registry.

DEPTH CHART
20 ft
40 ft
80 ft
100 ft
120 ft
140 ft
150 ft
160 ft



COOL COLOR CHANGES.

A pair of tinted glasses is supplied to every passenger to experience how colors change at different depths.



*Actual style of glasses may vary.